

KANISHI

IJP12C1

Low Investment

High Return



Wide variety of print sizes for enlargements and panorama prints



Touch Screen

Real-time reflection of ink level and printing progress.
Easy for machine operation and maintenance.



Maximum print size
Roll paper
305 x 1,500 mm

Easy roll paper replacement

IJP12C series support all of the print sizes you need.
Roll paper widths of 102 mm to 305 mm are easily loaded into the printer.

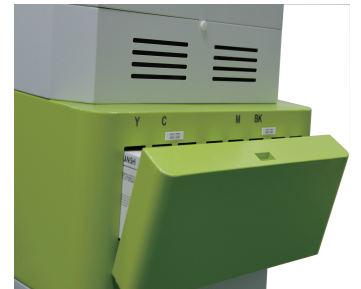


Easy ink cartridge replacement

4 colors dye ink

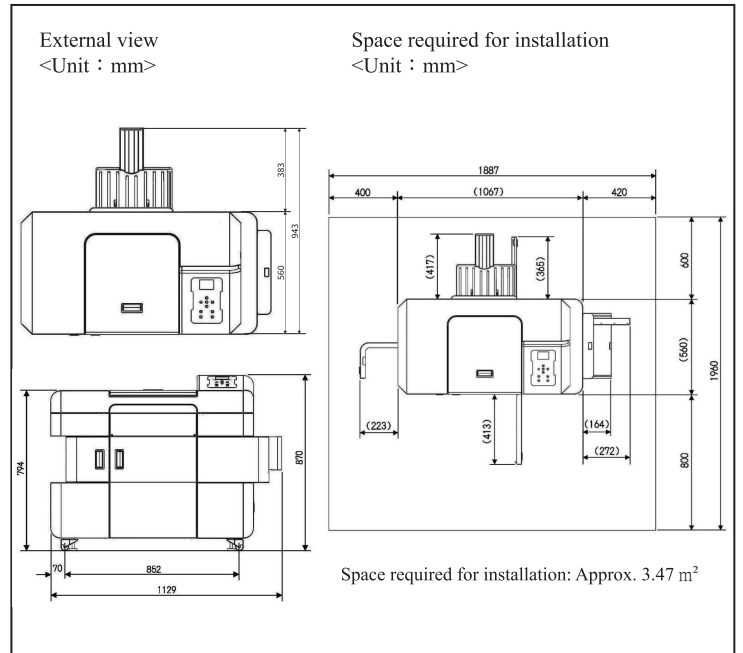


There are no photofinishing chemicals involved with dry systems. This brings a reduction in time and costs, as you no longer have to be concerned about maintaining specific chemical temperatures and conditions, as well as the handling and disposing of chemical solutions.



Specifications	
Printing system	Piezoelectric inkjet system
Print resolution	600 x 1200 dpi / 900x 1200 dpi / 1200 x 1200 dpi
Print size	Roll paper
	Paper widths: 102, 127, 152, 203, 254, 279, 305 mm Paper advance lengths : 88.9 to 1,500 mm
Maximum print size	Roll paper: 305 x 1,500 mm
Ink cartridge	Volume : 440 ml per cartridge Dye ink: Y (Yellow), M (Magenta), C (Cyan), BK (Black)
Dimensions	See External view excluding CVP unit (option)
Weight	Approx. 112 kg (excluding options, paper, ink cartridges and CVP unit)
Power specifications	AC 200V to 240V 1P2W 50/60 Hz
Rated power capacity	1,300 VA

Print capacity for roll paper (Approx. prints/hour)* 1			
Print size (Width x Advance length)	Print resolution		
	600 x 1200 dpi	900 x 1200 dpi	1200 x 1200 dpi
127 x 89mm	400	280	220
127 x 178 mm	200	150	120
152 x 102 mm	360	240	180
203 x 152 mm	210	150	110
254 x 203 mm	150	100	80
305 x 203 mm	140	90	70
305 x 203 mm	110	80	50



* 1 Calculated according to our criteria. The capacity you achieve may be different.

KANISHI ENGINEERING LIMITED

27/F, Tower A, Southmark, 11 Yip Hing Street,
Wong Chuk Hang, Hong Kong

Tel: 852-28700113
Email: kanishi@kanishi.com

KANISHI is a trademark of Kanishi Trading Company Limited

© 2026 KANISHI Group. All rights reserved.

OFFICE
KANISHI TRADING (SHANGHAI) CO.,LTD.
KANISHI DIGITAL TECHNOLOGY (CHINA) CO.,LTD.
KANISHI JAPAN CO.,LTD.
KANISHI PHILIPPINES INC.

KANISHI LEKAI INT'L LIMITED
KANISHI TAIWAN CO., LTD.
KANISHI ENGINEERING (AUSTRALIA) PTY LTD
KANISHI GERMANY GMBH

PHONE NO.
(86) 21-58683916
(86) 316-5918602
(81) 73-488-6820
(632) 812 8443 TO 45

(852) 2870-0113

ADDRESS
Room 708, No.2 Maji Road Waigaoqiao Free Trade Zone Shanghai, China 200131
No.2 Fifth Road Langfang Economic & Technical Development Zone Hebei, China 065001
579-8 Umehara Wakayama-Shi Japan 640-8452
Unit 1418 & 1419, 14/F, One Park Drive 9th Avenue Cor. 11th Drive, North Bonifacio,
Bonifacio Global City, Taguig 1634, Philippines
27F, Tower A, Southmark, 11 Yip Hing Street, Wong Chuk Hang, Hong Kong
8F-2, No 163, SEC.1, Kee Lung Road, Xinyi District, Taipei City 11070, Taiwan.
Unit 1, 182 Eighth Avenue, Inglewood, WA 6052, Australia
Gruenstr 5 40210 Dusseldorf, Germany

The specifications, information, and appearance of the machine herein are subject to change without notice.